

The Scheduling Power of the EU Council Presidency

Online appendix

Frank M. Häge

University of Limerick

- 1. Table of estimation results from mixed effects regressions**
- 2. Additional figures for variance component analyses**
- 3. Replication analysis with lowess bandwidth set to 0.2**
- 4. Replication analysis with lowess bandwidth set to 0.8**

1. Table of estimation results from mixed effects regressions

Table A1 Mixed effects regressions of percentage of working party meeting time by policy area

Policy area	Fixed part	Random part (standard deviations)		
	Intercept α	Presidency σ_{γ}	Month σ_{δ}	Error σ_{ε}
General Affairs	0.07 -0.67, 0.82	0.94 0.66, 1.33	1.10 0.68, 1.79	1.61 1.45, 1.79
Foreign Affairs	-0.07 -1.76, 1.61	1.05 0.66, 1.66	2.74 1.74, 4.32	2.43 2.19, 2.70
Development	-0.02 -0.20, 0.16	0.32 0.22, 0.46	0.21 0.11, 0.39	0.58 0.52, 0.64
Budget	-0.03 -0.46, 0.40	0.20 0.09, 0.41	0.70 0.44, 1.12	0.67 0.60, 0.74
Economic & Financial Affairs	-0.01 -0.33, 0.31	0.53 0.35, 0.80	0.39 0.21, 0.73	1.11 1.00, 1.23
Justice & Home Affairs	0.06 -0.49, 0.62	0.82 0.51, 1.32	0.71 0.38, 1.33	2.00 1.80, 2.23
Agriculture	-0.05 -0.55, 0.44	0.63 0.37, 1.08	0.67 0.37, 1.20	1.69 1.52, 1.88
Fisheries	0.01 -0.28, 0.29	0.43 0.30, 0.61	0.39 0.23, 0.66	0.75 0.67, 0.83
Internal Market	-0.03 -0.52, 0.46	0.66 0.41, 1.05	0.66 0.37, 1.16	1.59 1.43, 1.77
Telecommunications	0.00 -0.22, 0.22	0.39 0.29, 0.53	0.29 0.17, 0.49	0.58 0.52, 0.64
Energy	0.01 -0.18, 0.19	0.21 0.14, 0.33	0.28 0.17, 0.46	0.48 0.43, 0.53
Research	0.04 -0.16, 0.24	0.53 0.38, 0.73	0.07 0.00, 3.26	0.84 0.76, 0.93
Employment & Social Policy	0.01 -0.33, 0.35	0.29 0.20, 0.42	0.55 0.35, 0.87	0.55 0.49, 0.61
Transport	-0.02 -0.61, 0.58	0.20 0.06, 0.71	0.98 0.62, 1.55	0.96 0.87, 1.07
Environment	0.06 -0.38, 0.51	0.00 0.00, 3525570.66	0.71 0.44, 1.17	1.13 1.03, 1.24
Health & Consumer Policy	0 -0.27, 0.27	0.31 0.21, 0.47	0.40 0.24, 0.65	0.64 0.57, 0.71
Education, Youth & Culture	-0.01 -0.43, 0.41	0.10 0.01, 1.84	0.69 0.43, 1.09	0.77 0.69, 0.85

2. Additional figures for variance component analyses

Figure A1 Percentage of working party meeting time and estimated trends by policy area, 1995-2014

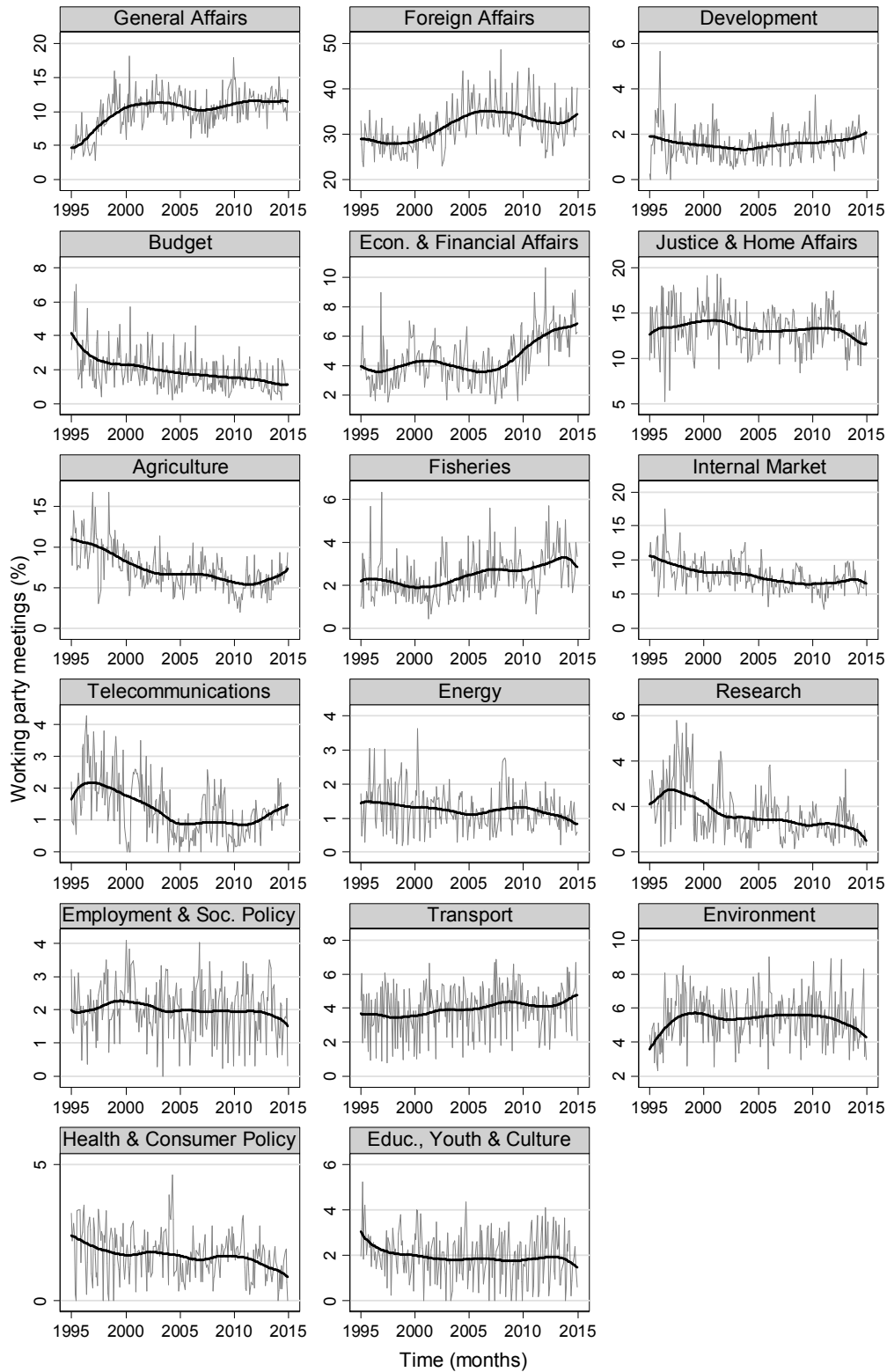
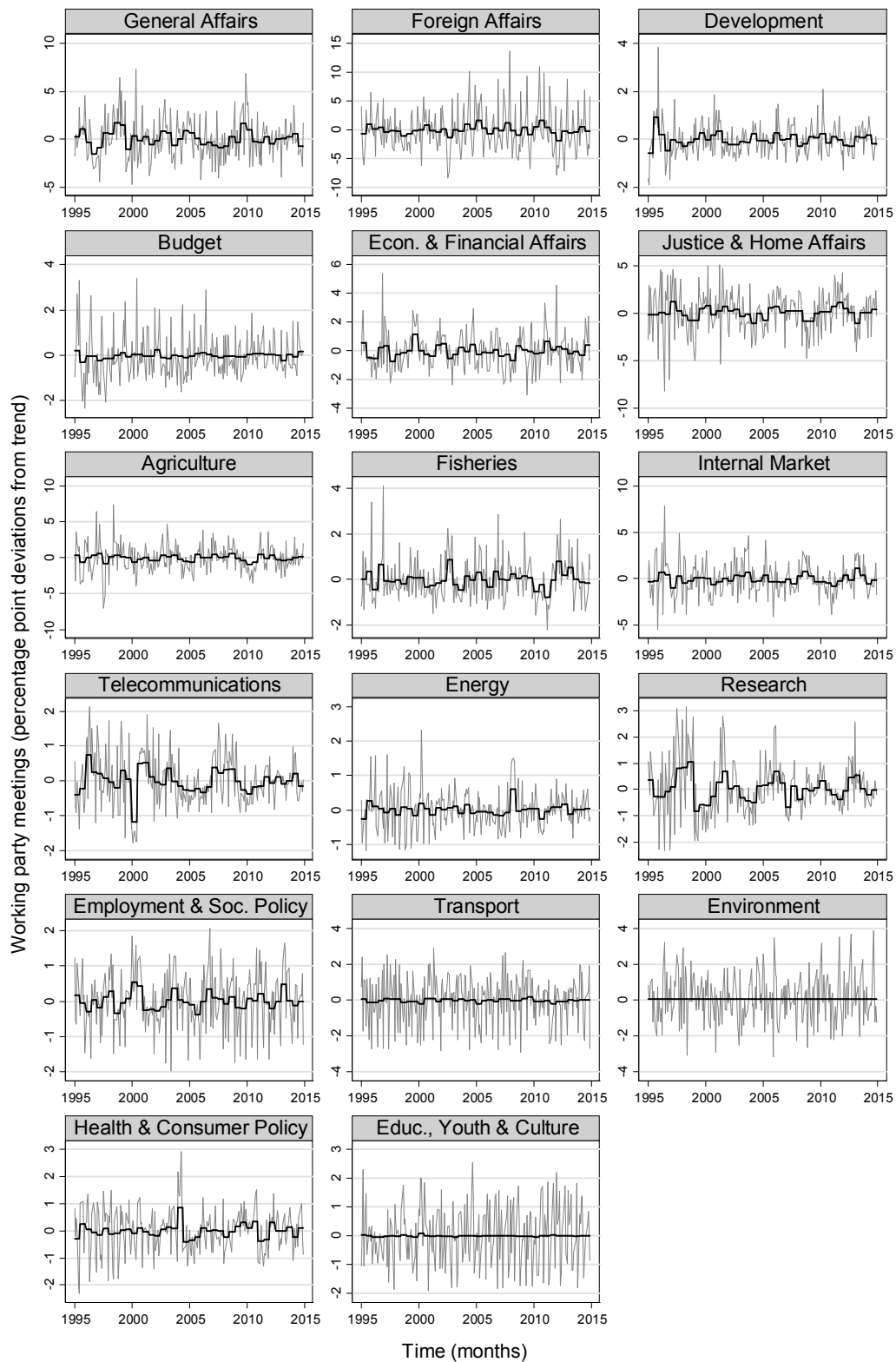


Figure A2 Observed vs. fitted values based on mixed effects regression, 1995-2014



3. Replication analysis with lowess bandwidth set to 0.2

Table A2 Mixed effects regressions of percentage of working party meeting time by policy area

Policy area	Fixed part	Random part (standard deviations)		
	Intercept α	Presidency σ_{γ}	Month σ_{δ}	Error σ_{ϵ}
General Affairs	0.02 -0.66, 0.70	0.57 0.31, 1.03	1.05 0.66, 1.67	1.61 1.45, 1.80
Foreign Affairs	-0.02 -1.60, 1.56	0.55 0.19, 1.65	2.60 1.68, 4.02	2.42 2.18, 2.69
Development	0.01 -0.15, 0.17	0.24 0.15, 0.39	0.19 0.11, 0.36	0.58 0.52, 0.64
Budget	-0.02 -0.43, 0.39	0.02 0.00, 4.04e+23	0.67 0.43, 1.04	0.68 0.61, 0.75
Economic & Financial Affairs	-0.02 -0.32, 0.27	0.41 0.24, 0.71	0.37 0.20, 0.69	1.11 1.00, 1.23
Justice & Home Affairs	0.00 -0.48, 0.49	0.27 0.02, 3.78	0.67 0.36, 1.23	2.01 1.81, 2.23
Agriculture	-0.03 -0.48, 0.42	0.36 0.11, 1.20	0.63 0.35, 1.11	1.69 1.52, 1.88
Fisheries	0.01 -0.25, 0.27	0.32 0.21, 0.51	0.37 0.22, 0.61	0.75 0.67, 0.83
Internal Market	0.02 -0.42, 0.46	0.38 0.14, 1.02	0.62 0.35, 1.08	1.60 1.44, 1.78
Telecommunications	0.02 -0.19, 0.22	0.30 0.21, 0.43	0.28 0.17, 0.46	0.58 0.52, 0.64
Energy	0.01 -0.17, 0.18	0.17 0.09, 0.29	0.26 0.16, 0.43	0.48 0.43, 0.53
Research	0.01 -0.13, 0.15	0.26 0.13, 0.50	0.07 0.00, 2.72	0.84 0.75, 0.93
Employment & Social Policy	0.00 -0.32, 0.32	0.21 0.12, 0.35	0.52 0.33, 0.81	0.55 0.49, 0.61
Transport	-0.01 -0.57, 0.55	0.00 0.00, 3.10e+242	0.92 0.60, 1.44	0.95 0.86, 1.04
Environment	0.02 -0.41, 0.44	0.00 Not estimable	0.68 0.42, 1.08	1.10 1.00, 1.22
Health & Consumer Policy	0.00 -0.25, 0.25	0.25 0.15, 0.41	0.38 0.23, 0.61	0.64 0.57, 0.71
Education, Youth & Culture	-0.01 -0.41, 0.39	0.00 Not estimable	0.65 0.42, 1.02	0.76 0.69, 0.83

Figure A3 Percentage of working party meeting time and estimated trends by policy area, 1995-2014

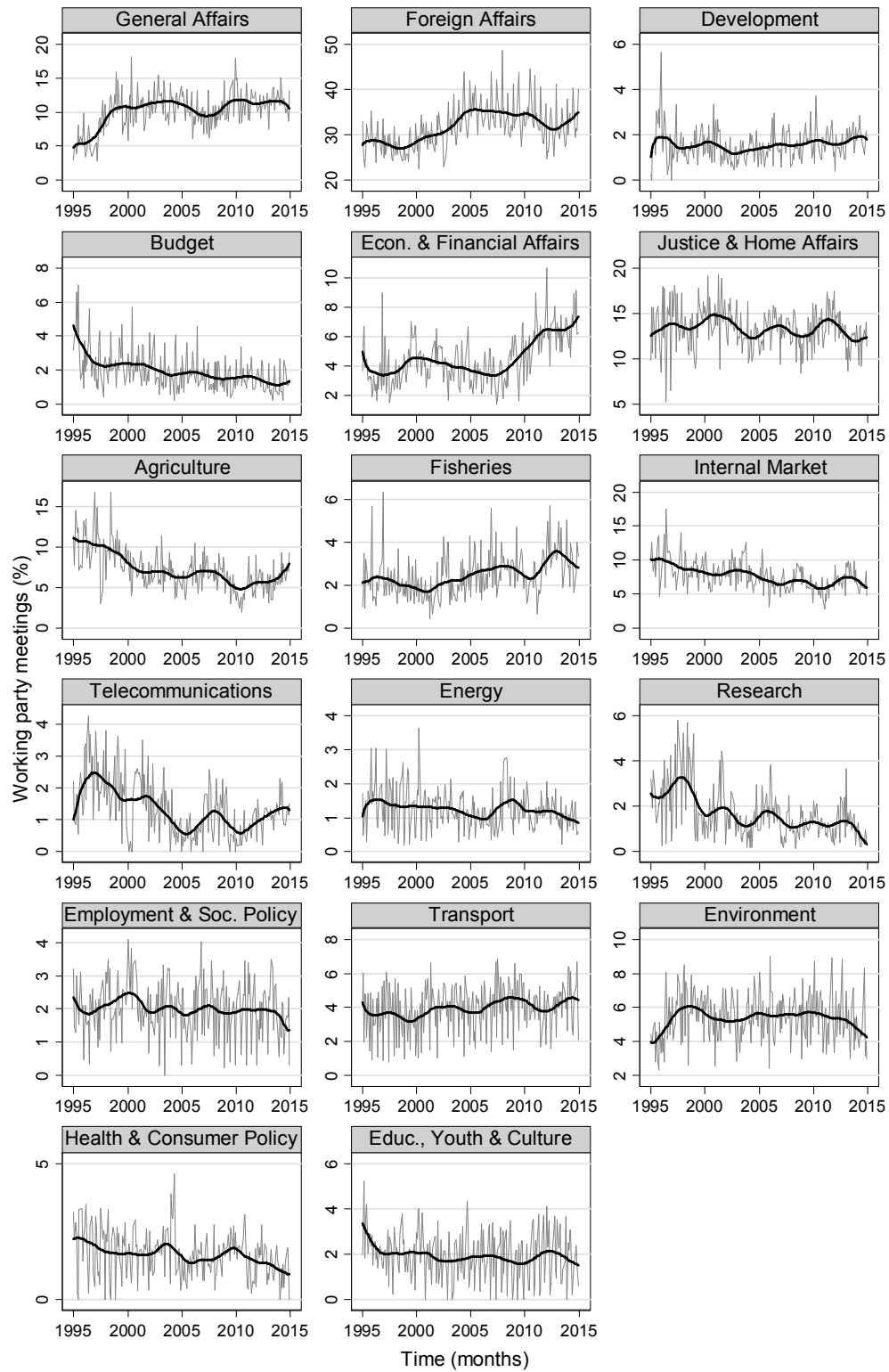


Figure A4 Observed vs. fitted values based on mixed effects regression, 1995-2014

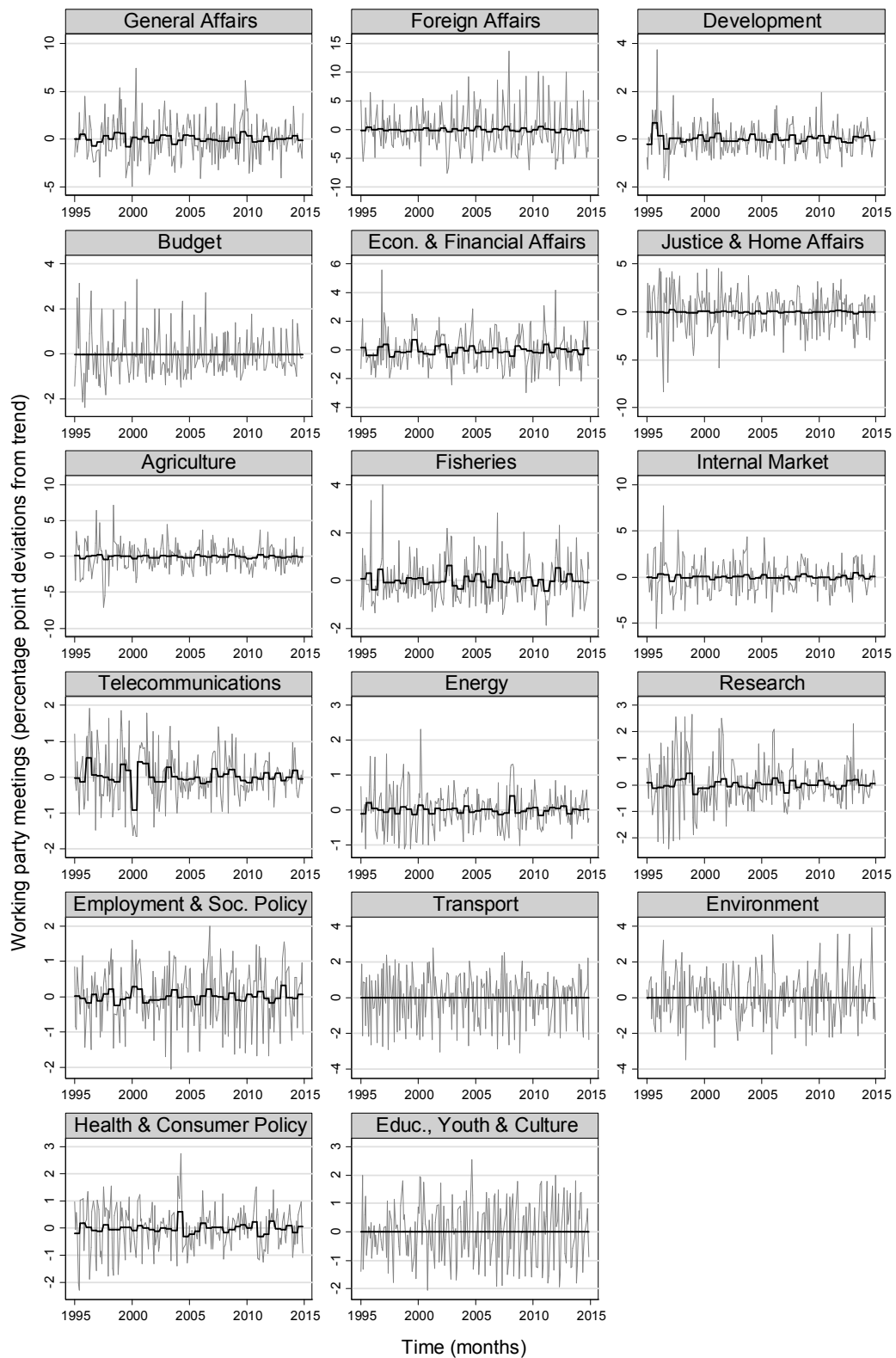


Figure A5 Estimated standard deviations of Presidency period random effects

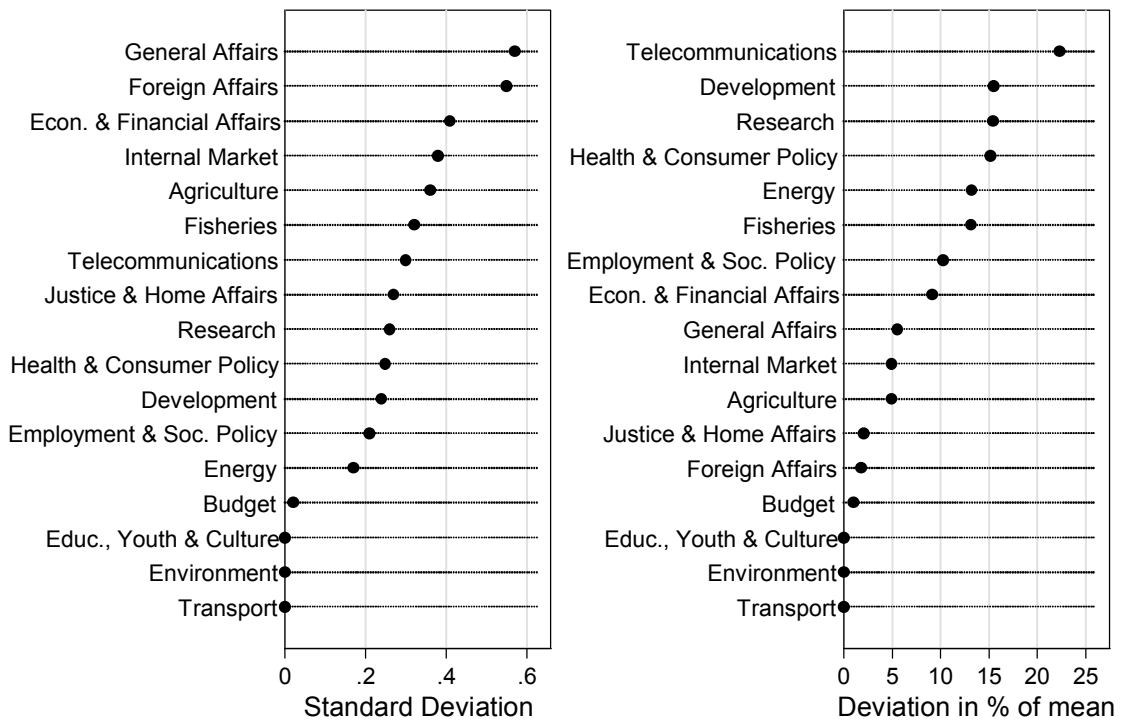
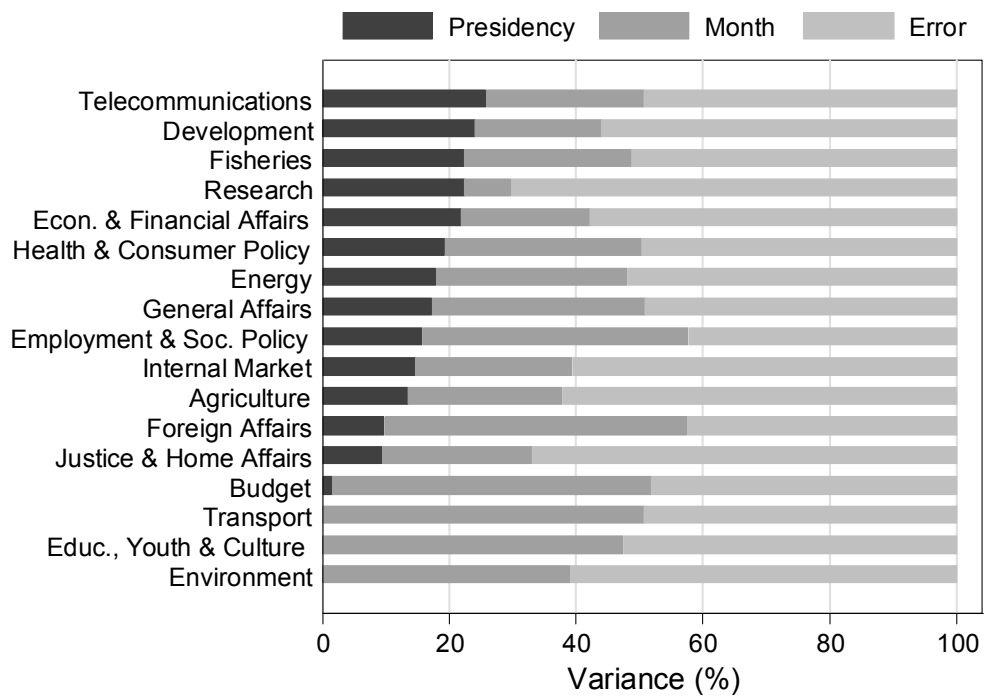


Figure A6 Variance components estimates by policy area, 1995-2014



4. Replication analysis with lowess bandwidth set to 0.8

Table A3 Mixed effects regressions of percentage of working party meeting time by policy area

Policy area	Fixed part	Random part (standard deviations)		
	Intercept α	Presidency σ_{γ}	Month σ_{δ}	Error σ_{ε}
General Affairs	0.21 -0.54, 0.96	1.16 0.86, 1.57	1.06 0.66, 1.69	1.61 1.45, 1.79
Foreign Affairs	0.14 -1.51, 1.78	1.44 1.02, 2.04	2.63 1.70, 4.07	2.43 2.19, 2.71
Development	-0.02 -0.20, 0.15	0.33 0.23, 0.47	0.20 0.11, 0.37	0.58 0.52, 0.64
Budget	-0.03 -0.44, 0.39	0.28 0.18, 0.44	0.67 0.43, 1.05	0.67 0.60, 0.74
Economic & Financial Affairs	-0.06 -0.40, 0.27	0.68 0.49, 0.95	0.37 0.20, 0.69	1.11 1.00, 1.23
Justice & Home Affairs	0.08 -0.48, 0.64	0.94 0.63, 1.42	0.67 0.36, 1.25	2.00 1.80, 2.23
Agriculture	-0.16 -0.66, 0.33	0.76 0.49, 1.18	0.64 0.36, 1.13	1.70 1.53, 1.89
Fisheries	-0.04 -0.32, 0.24	0.48 0.35, 0.66	0.36 0.22, 0.61	0.75 0.67, 0.83
Internal Market	-0.11 -0.59, 0.38	0.73 0.48, 1.11	0.63 0.36, 1.10	1.59 1.43, 1.77
Telecommunications	-0.04 -0.27, 0.19	0.45 0.34, 0.60	0.28 0.16, 0.46	0.58 0.52, 0.64
Energy	0.01 -0.18, 0.19	0.23 0.16, 0.34	0.26 0.16, 0.43	0.48 0.43, 0.53
Research	-0.02 -0.22, 0.19	0.54 0.39, 0.75	0.06 0.00, 11.60	0.84 0.76, 0.93
Employment & Social Policy	0.02 -0.31, 0.35	0.30 0.21, 0.44	0.52 0.34, 0.81	0.55 0.49, 0.61
Transport	0.00 -0.57, 0.57	0.31 0.16, 0.59	0.93 0.60, 1.44	0.96 0.87, 1.07
Environment	0.07 -0.35, 0.50	0.14 0.01, 3.79	0.67 0.42, 1.09	1.16 1.04, 1.29
Health & Consumer Policy	0.00 -0.26, 0.27	0.33 0.23, 0.48	0.38 0.24, 0.61	0.64 0.58, 0.71
Education, Youth & Culture	-0.03 -0.43, 0.38	0.19 0.08, 0.47	0.66 0.42, 1.03	0.76 0.69, 0.85

Figure A7 Percentage of working party meeting time and estimated trends by policy area, 1995-2014

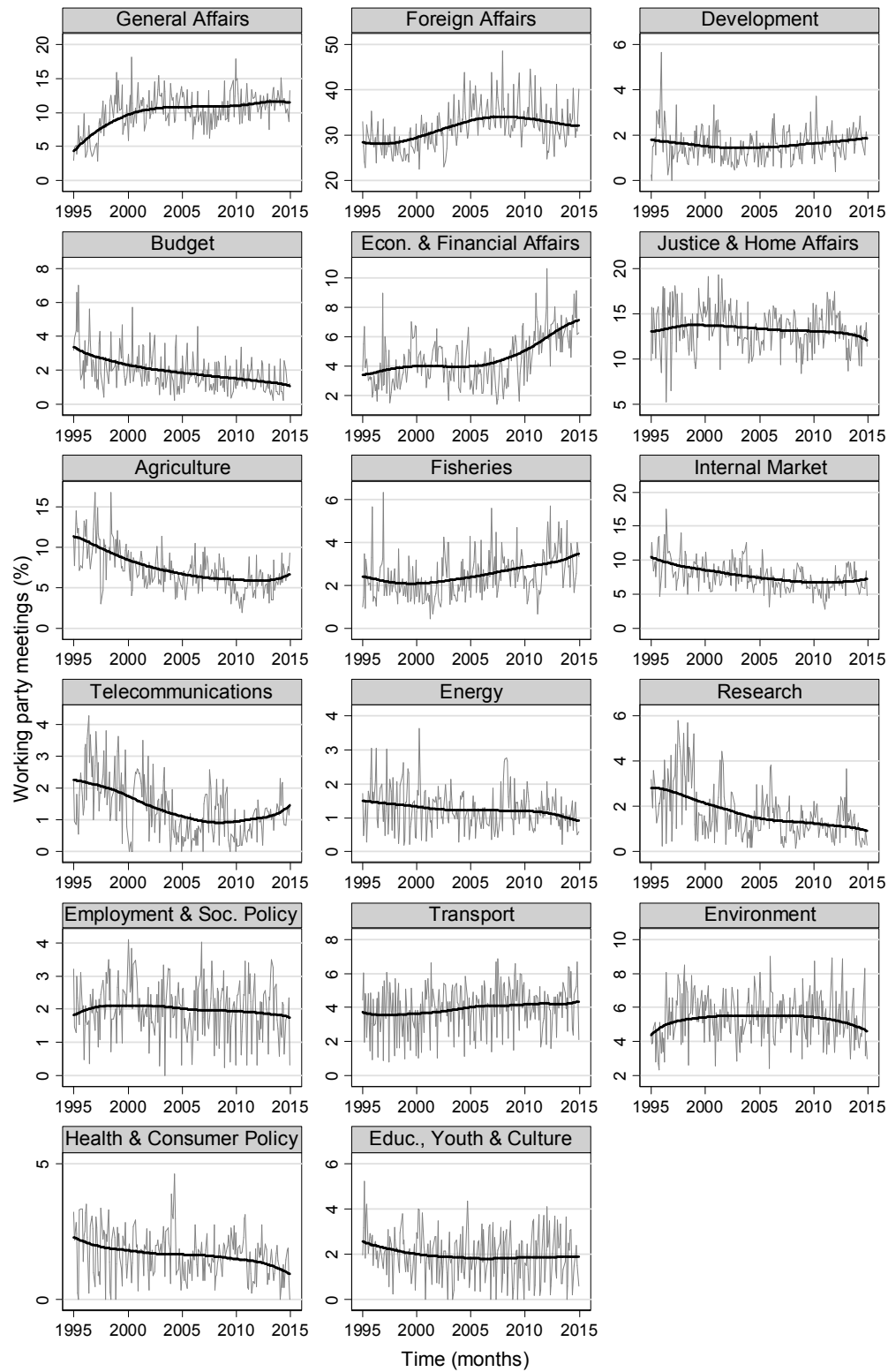


Figure A8 Observed vs. fitted values based on mixed effects regression, 1995-2014

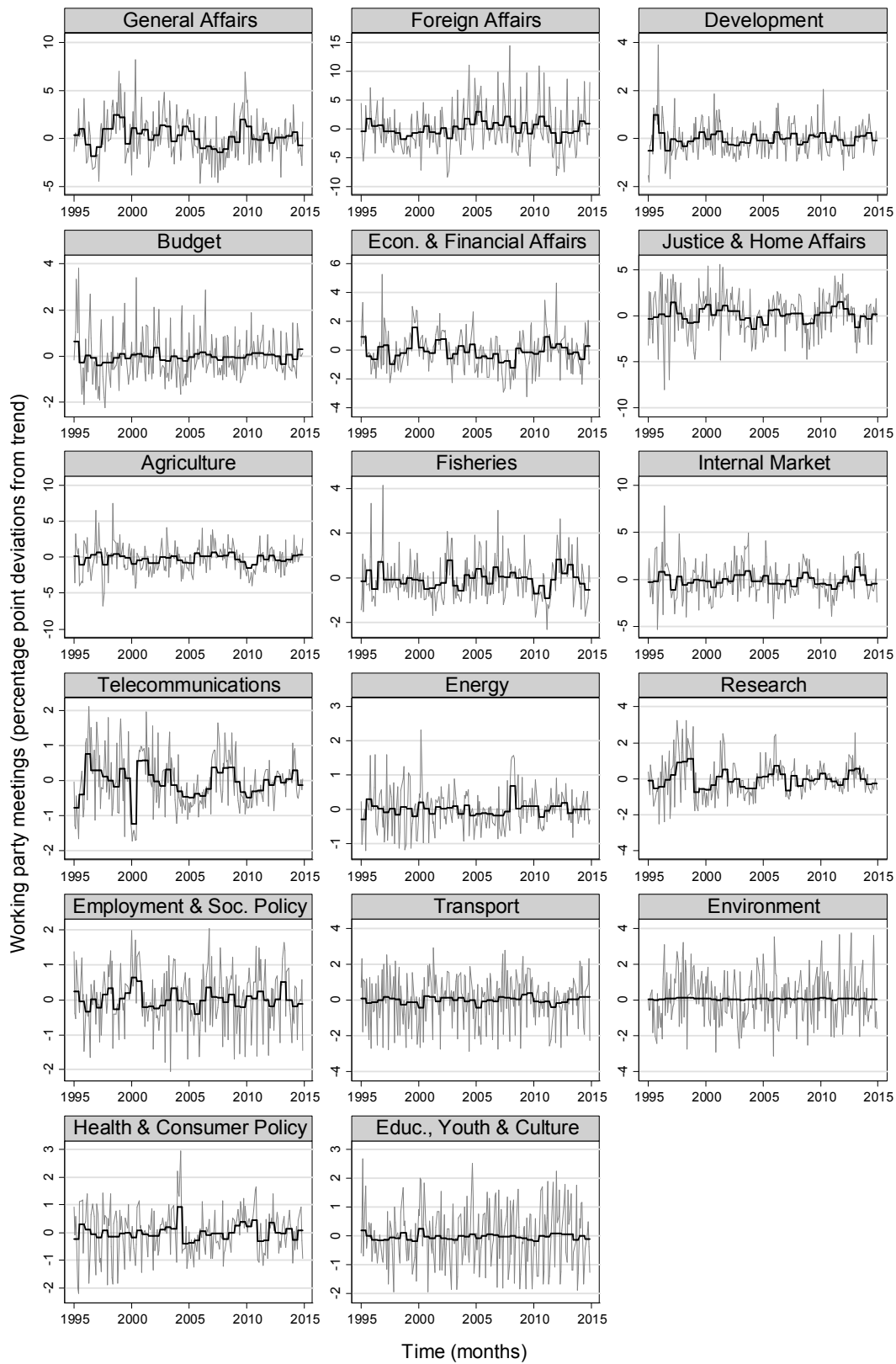


Figure A9 Estimated standard deviations of Presidency period random effects

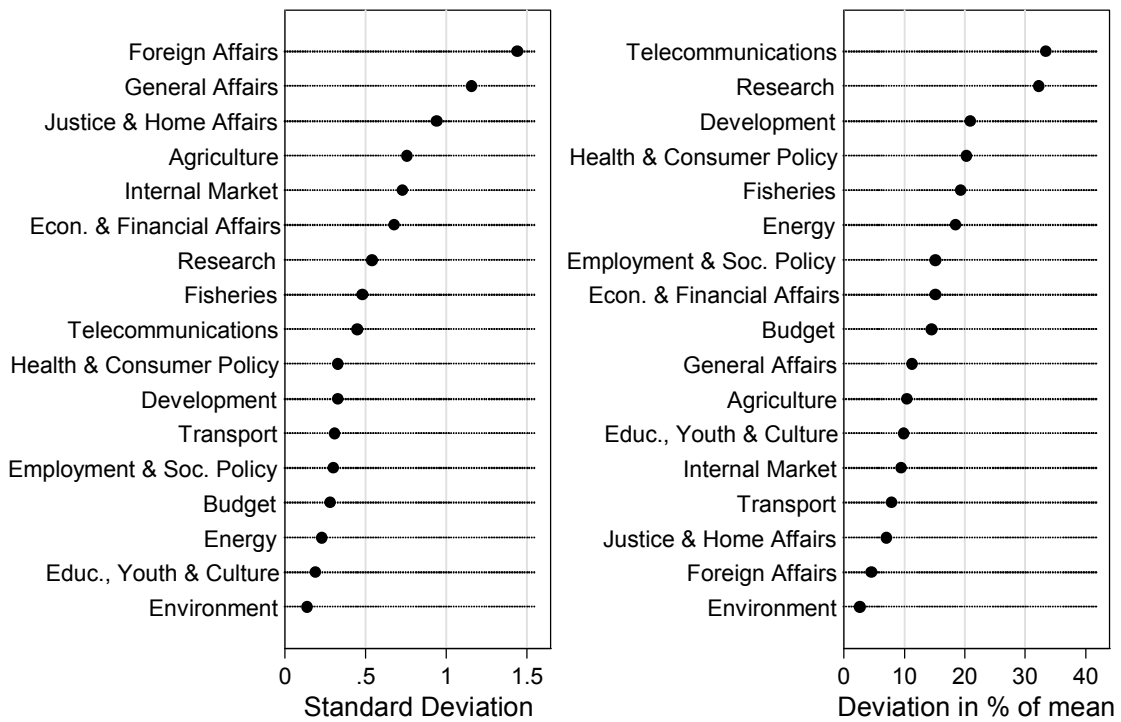


Figure A10 Variance components estimates by policy area, 1995-2014

